

DATA SHEET: TEMBREAK 2 S800-CJ MCCB - Updated Feb 2024

MCCB Electrical Characteristics to IEC 60947-2, EN 60947-2, JIS C 8201-2-1 ANN.1, AS/NZS 3947-2, NEMA AB-1

Frame reference	Quantity	Unit	Condition	TB2 1000
Max In (A) of Frame				800
Model				S800
Number of Poles				3, 4
Type				CJ
Nominal current ratings				
	I_n	(A)	50°C	630 800
Electrical characteristics				
Rated operational voltage	U_e	(V)	AC 50/60 Hz DC	690 -
Rated insulation voltage	U_i	(V)		800
Rated impulse withstand voltage	U_{imp}	(kV)		8
Ultimate breaking capacity (IEC, JIS, AS/NZS)	I_{cu}	(kA)	690V AC 525V AC 440V AC 400/415V AC 220/240V AC 250V DC	10 ^① 15 ^① 30 36 50 50
Service breaking capacity (IEC, JIS, AS/NZS)	I_{cs}	(kA)	690V AC 525V AC 440V AC 400/415V AC 220/240V AC 250V DC	10 ^① 15 ^① 30 36 50 50
Rated breaking capacity (NEMA)		(kA)	480V AC 240V AC	15 50
Rated short-time withstand current	I_{cw}	(kA)	0.3 Seconds	-
Protection				
Adjustable thermal, adjustable magnetic				■
Fixed thermal, fixed magnetic				
Microprocessor				
Utilisation category				A
Installation				
Front connection (FC)				■
Extension bar (FB)				•
Cable clamp (FW)				• ^②
Rear connection (RC)				•
Plug-in (PM)				•
DIN rail mounting (DA)				-
Dimensions	height	(mm)		273
	width	(mm)	3 pole 4 pole	210 280
	depth	(mm)		103
Weight	weight	(kg)	3 pole 4 pole	8.5 11.5
Operation				
Direct Opening Action				■
Toggle operation				■
Door mounted (HS) / Breaker mounted handle (HB)				•
Motor operation (MC)				•
Endurance	Electrical Mechanical	cycles cycles	690V AC	4,000 10,000

① MCCB cannot be used in IT systems at this voltage

② 630A only

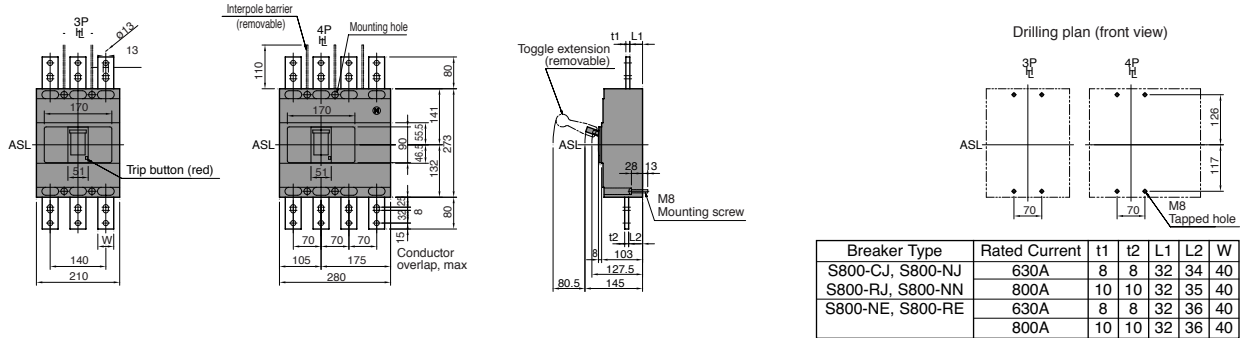
■ Standard • Optional - Not Available

DATA SHEET: TEMBREAK 2 S800-CJ MCCB

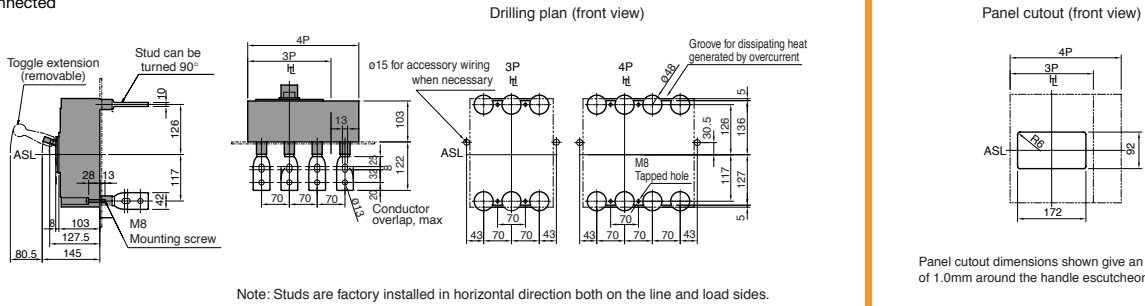
Outline Dimensions S800-CJ

ASL: Arrangement Standard Line \overline{H} : Handle Frame Centre Line

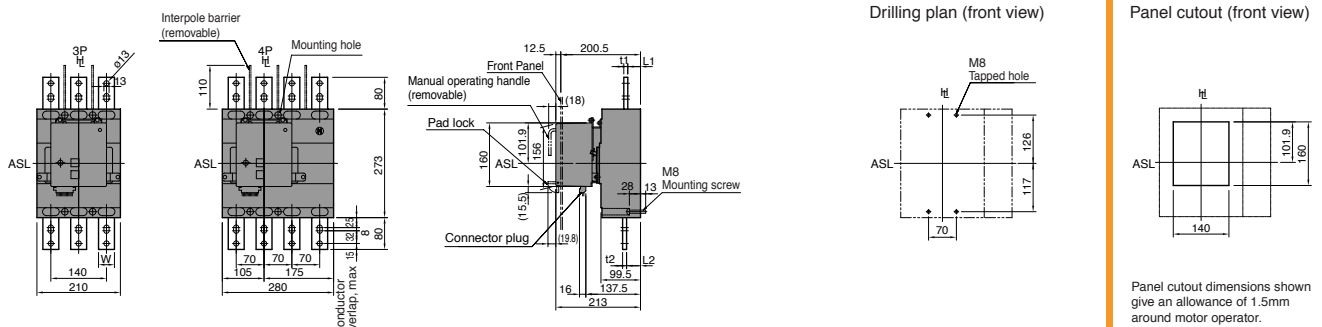
Front connected with extension bars (optional)



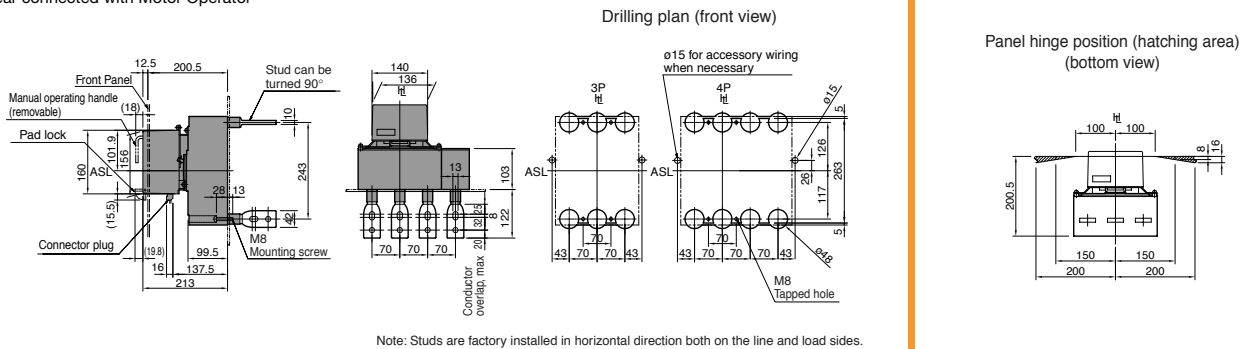
Rear connected



Front connected with Motor Operator



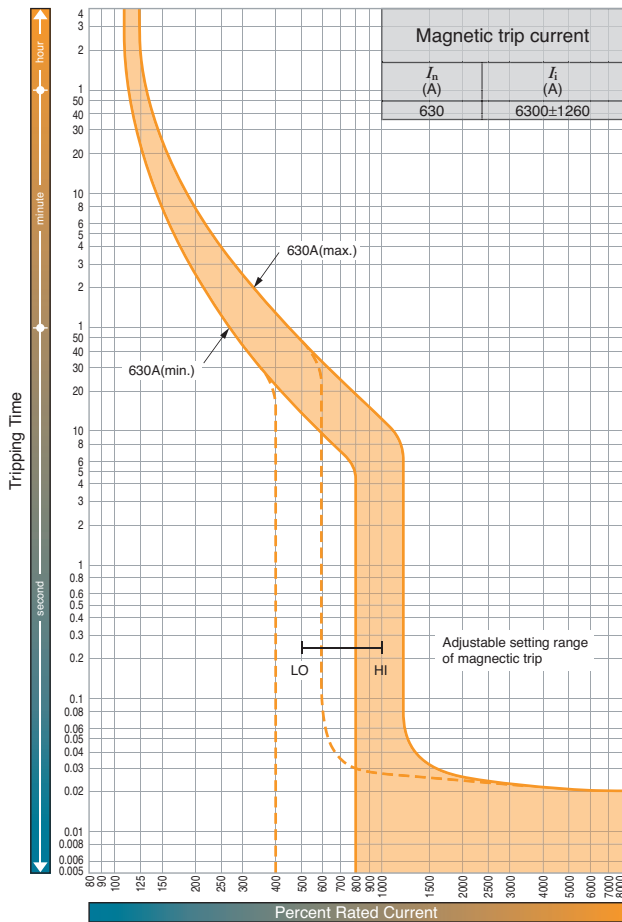
Rear connected with Motor Operator



DATA SHEET: TEMBREAK 2 S800-CJ MCCB

Time/Current Characteristic Curves

S800-CJ, (630A)



Time/Current Characteristic Curves

S800-CJ, (800A)

